

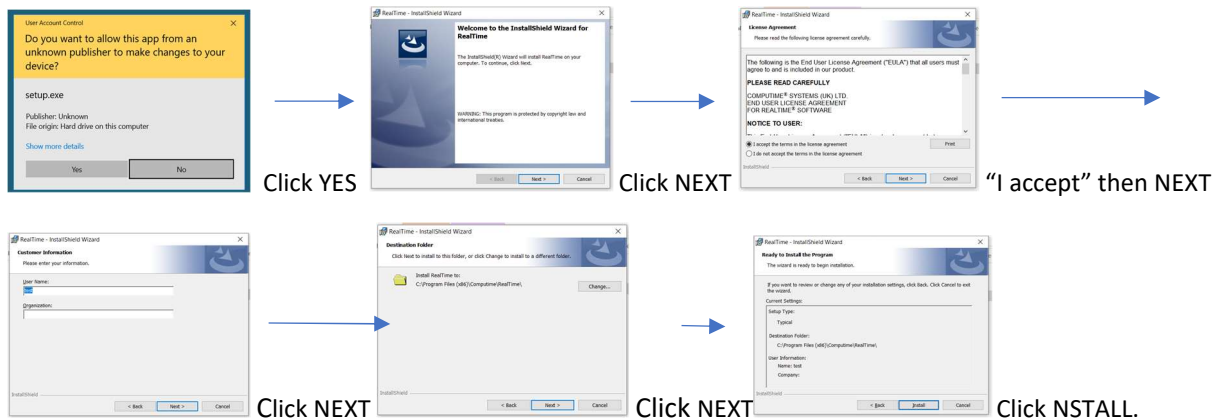
Downloads

1. Open the internet browser on your machine and navigate to <https://downloads.computimehr.com/index.php/downloads/>
2. Download the correct patch update if upgrading a machine. For fresh installs please download the full install set first and install then install the patch update.
3. Find the relevant download from your downloads folder.

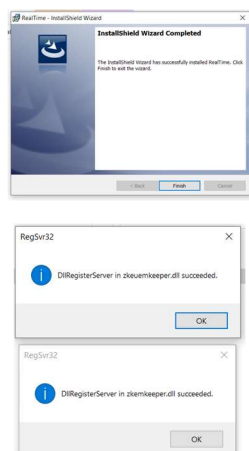
Installation

Open the installer file.

If you are presented with the following screen:



Click FINISH, YOU SHOULD SEE THE FOLLOWING POP UP IF RUNNING FULL INSTALLER BUT NOT FOR A PARCH INSTALL



(IF THE TWO BOXES DO NOT SHOW UP YOU WILL NEED ASSISTANCE FROM I.T. AS YOU DO NOT HAVE ADMINISTRATOR RIGHTS TO INSTALL SOFTWARE, THEY WILL NEED TO DO IT FOR YOU)

Connection

Double clicking this icon will launch Realtime.



THE FIRST TIME YOU OPEN REALTIME YOU WILL SEE A “DATABASE SETUP” SCREEN (see below) (you will not be prompted for this every time, as the details are saved in the system)

ENTER THE FOLLOWING DETAILS (AS SHOWN IN THE IMAGE BELOW):

Server name or Ip address: For Example-194.39.165.61

Port No: 0 (zero)

Database Name: Your Database

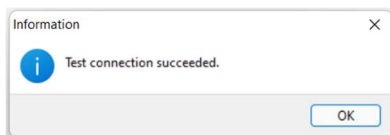
Username: Your User Name

User Password: Your User Password

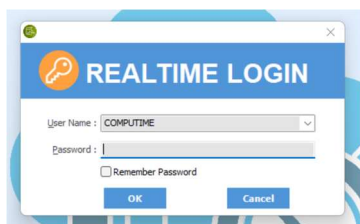
A screenshot of the 'Database Setup' window. The window has a blue header with the title 'Database Setup' and a gear icon. Below the header are three tabs: 'General', 'Permissions', and 'System Info'. The 'General' tab is selected. The main area is titled 'Database' and contains several input fields: 'Server Name or IP Address' (with the value 'Server Name/ IP Address'), 'Port No' (with the value '0'), 'Database Name' (with the value 'Database Name'), 'Admin User Name' (empty), 'Admin Password' (empty), 'User Name' (with the value 'User Name'), and 'User Password' (with the value 'User Password'). There are also checkboxes for 'Show Admin Password' and 'Show User Password'. At the bottom, there are three blue buttons: 'Enable User', 'Enable Database', and 'Test Connection'. A 'Save' button and a 'Cancel' button are also visible at the bottom right.

Then click the blue button which says, “test connection.”

You should see “Test Connection Succeeded” - click OK.



Then click on the “SAVE” button – this will open Realtime and take you to the login screen

A screenshot of the 'REALTIME LOGIN' window. The window has a blue header with the title 'REALTIME LOGIN' and a key icon. Below the header are two input fields: 'User Name' (with the value 'COMPUTIME') and 'Password'. There is also a checkbox for 'Remember Password'. At the bottom, there are two blue buttons: 'OK' and 'Cancel'.